

Najad 570. Challenge yourself in comfort.

Sailing the seven seas, easy two crew handling and cockpit dinners for eight.



The Najad 570 – Built to handle the seven seas, and a cockpit dinner for eight.

- Some facts:**
- Spacious, light deck saloon
 - Good sailing characteristics, easy handling, with only 2 crew
 - Technically simple, meeting the requirement for global cruising with service and maintenance possible world wide.
 - Ergonomic deck and an easily handled rig
 - State of the art electrical system inspired by and designed from commercial shipping standards
 - Deck fittings follow the view of a modern blue water cruiser’s requirements
 - Solid teak toerail with stainless steel protection, a double steering system with shaft drives, and a large Bathing Platform at the stern with integrated step

- Below deck:**
- Large space, along with tasteful and smart styling, make a large amount of variation possible
 - Combined with the classic Scandinavian style for light and clarity, the Najad 570 differs radically from previous production yachts of this size
 - Extra light interior due to the large windows in the deckhouse and hull, offering comfort and space

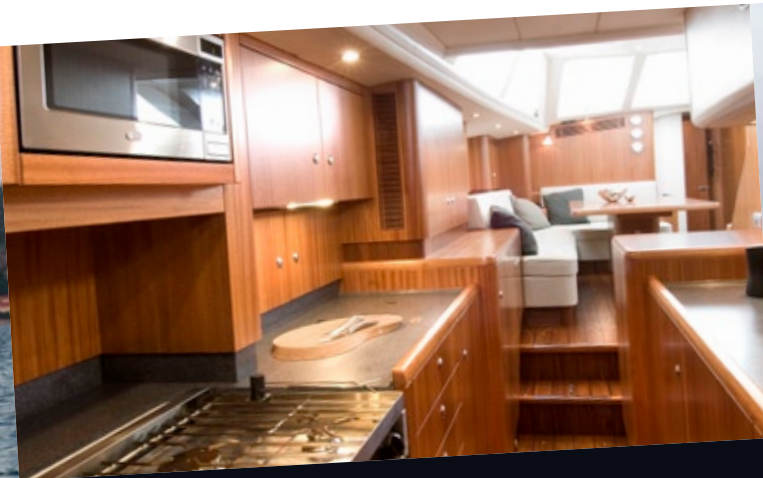
Designed by Najadvarvet, judel/vrolijk & co and Rhoades Young.

Specification:	
Length overall	17.50 m
Length waterline	16.55 m
Beam	5.05 m
Draught	2.70 m
* Alternative shallow draught	2.10 m
Displacement	26.0 t
Mast height above waterline	27.0 m
Engine Volvo Penta D4	180 hp
Water capacity	800 l
Fuel capacity	1,200 l
Holding capacity	140 l



The Saloon – room for the whole crew to sit down together for meals and social life. Ample overhead lights and reading lights at settees and berths. Electrical dimmers, handrails in stair in leather covered stainless steel, and folding table with locker under the table are other features.





Like a real kitchen:

- Superb double linear galley for cooking
- Work top in Corian® with s/s twin sinks
- Three burner, force 10 gas cooker with oven
- Large stowage for groceries
- Pressure system for hot and cold fresh water
- Lights over work area
- Self-closing drawers
- Space for optional dishwasher, galley fan and washing machine/dryer



A kitchen made for cooking, in moderate gale.

On trademark of Najad interiors is the spacious fit below deck, of course always with maintained good sailing characteristics.

Since food is a major part of life we believe that the kitchen should be just that – a kitchen, not a galley. Therefore it is designed as equally suited to the long-term live-aboard and ocean adventurer, as to a gentler life of coastal cruising and island hopping.

Just as in a normal kitchen, the attention to details, good crafts, sturdiness and design is crucial. Only here it's multiplied by 20 for obvious reasons; the powers of the sea. So the design is based on the fact that you should be able to cook, even under moderate gale conditions.

One subtle, smart detail is self-closing drawers. No self-cooking food, though. So, you still have to do the cooking yourself, we're afraid.



The birth of your yacht. Follow it on site and from the palm of your hand.



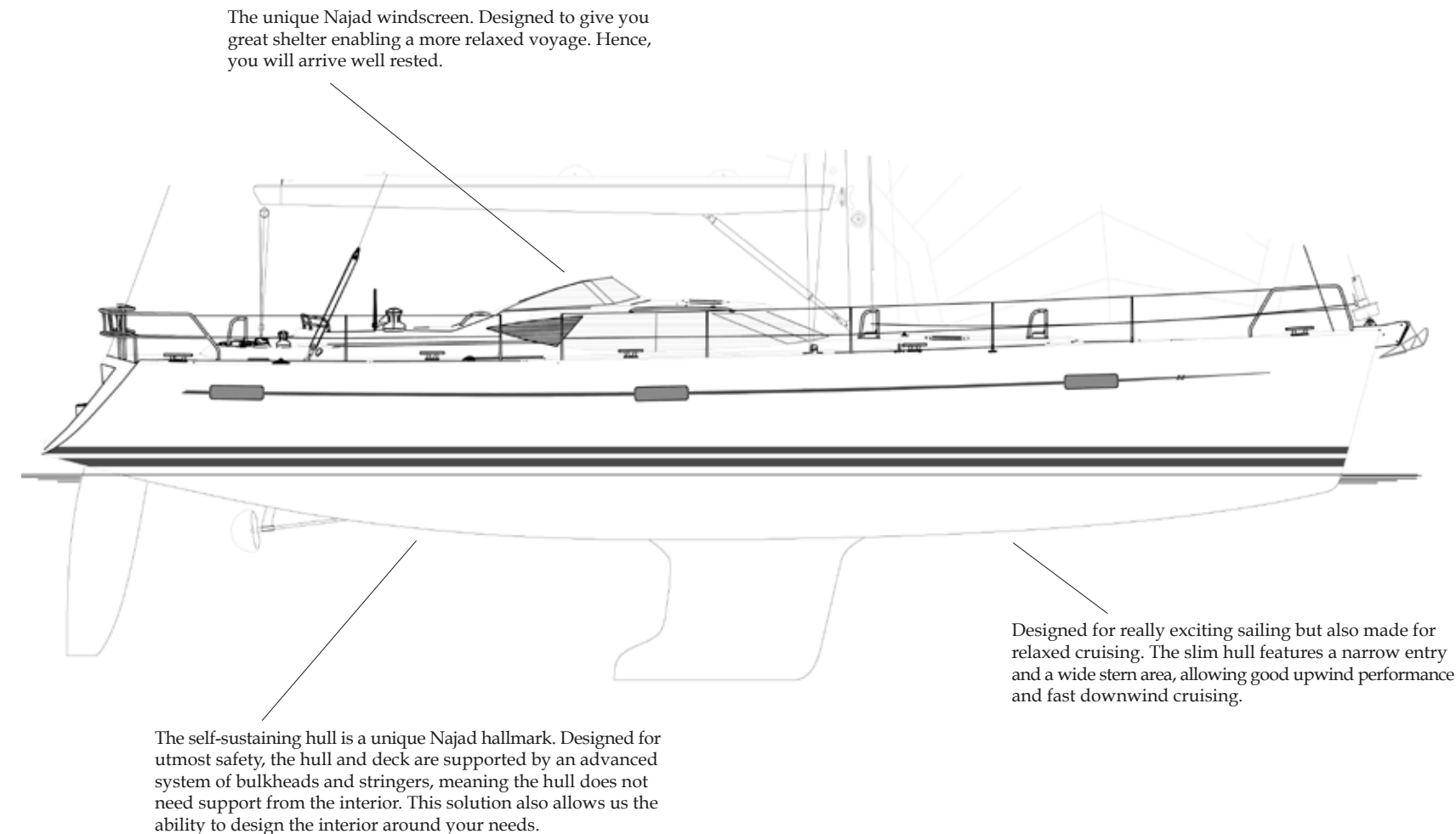
Being a passionate sailor, you are invited to build your yacht together with our equally passionate craftsmen.

Just like you, our customers are genuine and passionate sailors who appreciate the good things in life. Mrs Bodil Hägg (relaxing in the picture on the right) is one of these committed customers. "I ordered my new yacht on a strength of drawings alone and was in love with the concept right from the start", she says. It gives us great pleasure to see that our own passion for shipbuilding and custom-made

solutions evokes such pleasant reactions. The re-known safety and seaworthiness of a Najad hull are things that keep these passionate sailors calm.

The fact that they can follow the work in progress on site, but also through updates on their Najad Ipad is also keeping them at ease.

You are a passionate sailor and we are equally enthusiastic shipbuilders committed to make your dream project come true in the best possible way. After all, it's your baby.





No two Najad owners are alike.



Neither are their yachts.

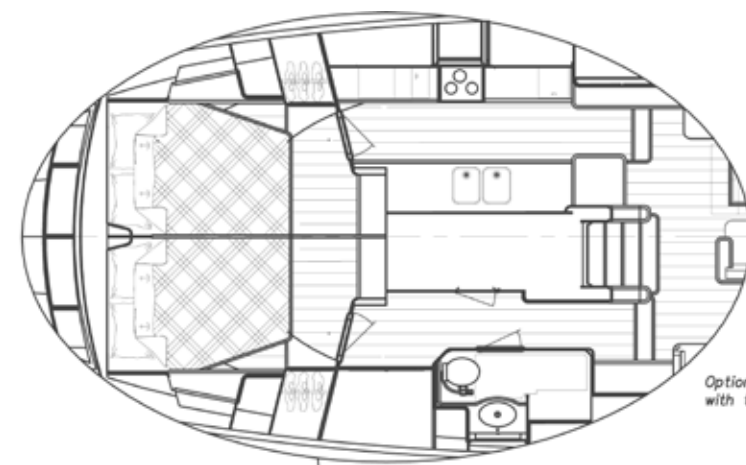
Personalizing your dream project is a major part of the Najad concept. It already starts before you sit down at the drawing board. Our people will discuss in detail with you how and where you will use your yacht and what you expect from your Najad. Based on your wishes you will receive a fully detailed customized solution and offer.

Apart from changes to the hull form and main bulkhead positions, every new 570

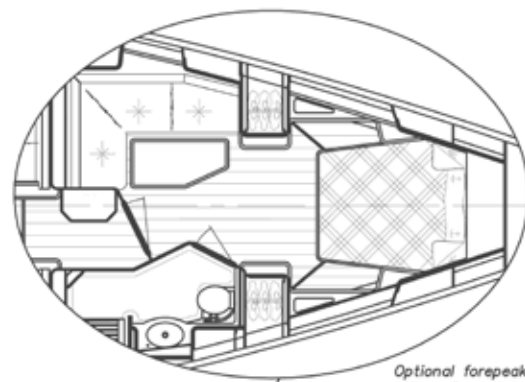
can be customized to satisfy the needs and the preferred sailing style of each owner. The internal layout, accommodation and living arrangements can be individually specified and matched with different fabrics and colour schemes.

Consequently every new yacht becomes a personal statement – an expression of individuality and style linked with each owner's practical needs on board.

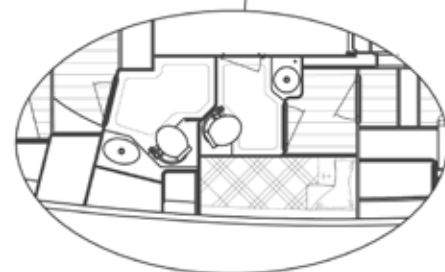
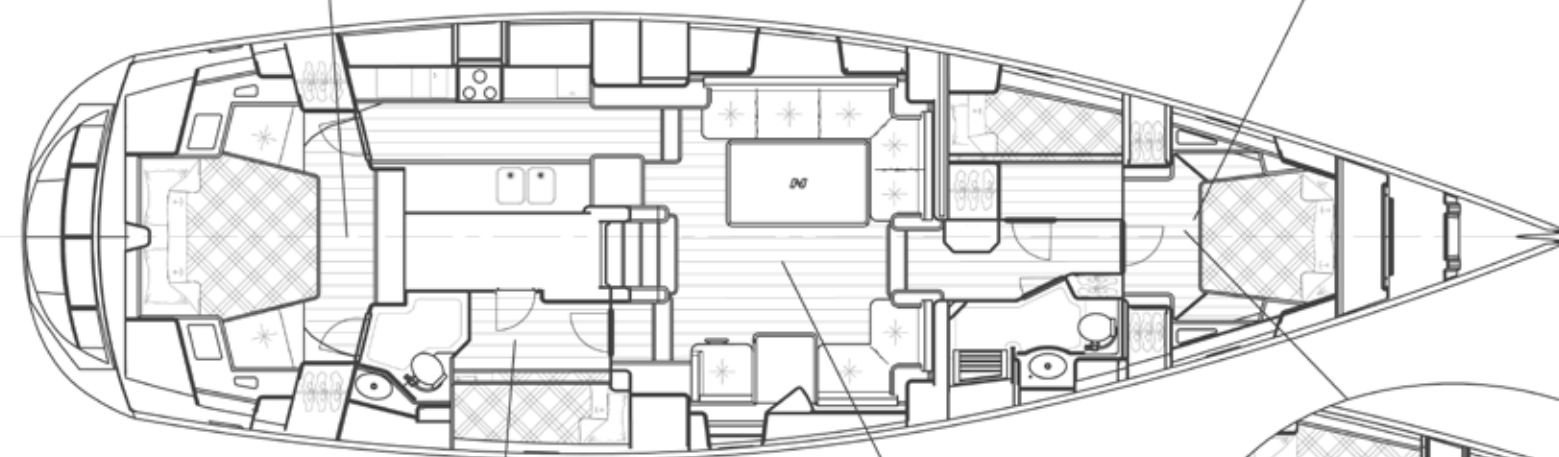
This interaction between customer and boat builder is an important dynamic. No Najad Yacht is like any other; each reflects the sailing life of their owners. Of course they all have the same strong all-weather hulls, that will take you anywhere on the seven seas, and they're all built with the same fastidious attention to detail. But each of them speaks volumes about the way its owner takes to the sea.



Optional aft layout
with two double berth cabins



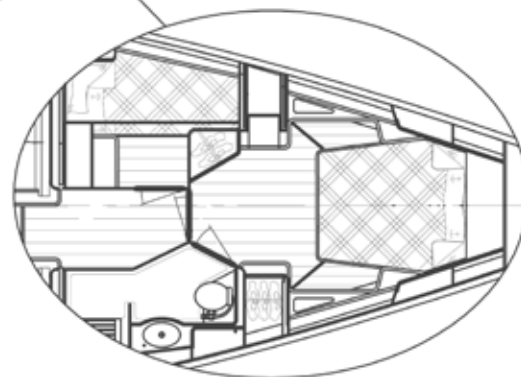
Optional forepeak
with sofa and table



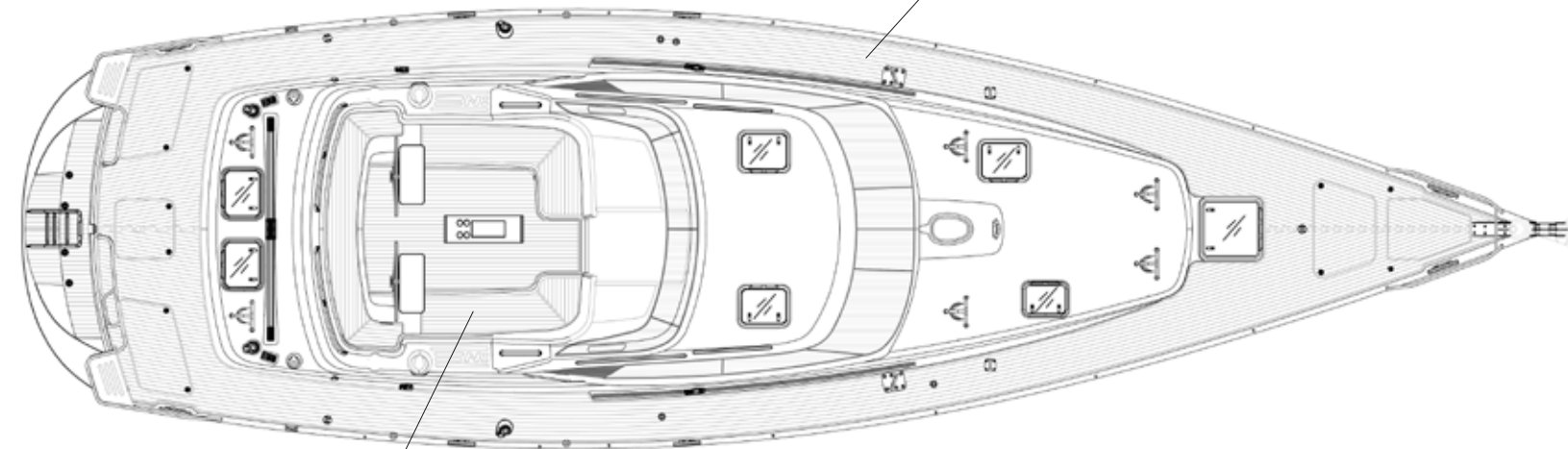
Crew cabin with personal heads



Optional mid sofa
Optional adjustable saloon table



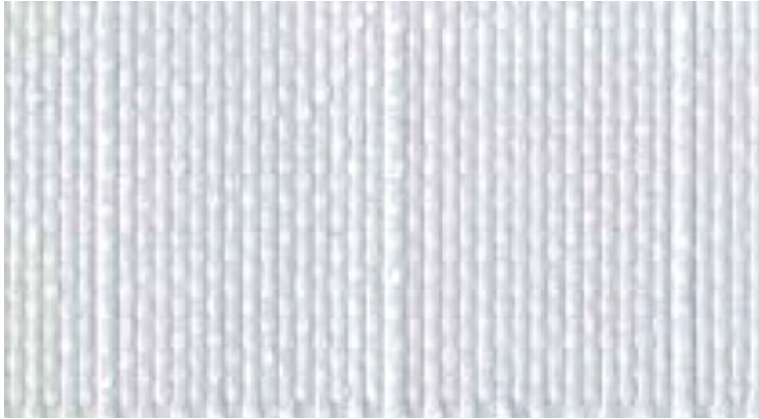
Optional forepeak



Spacious, deep and safe cockpit for ease of
handling, or wining and dining for 8 people.

At Najad we have this thing for authenticity. Therefore we travel to African and Asian wood suppliers (we do not use wood from wild trees) to pick out only the best wood suited to become the deck and interior on your yacht.





Standard

DYS – Spectra

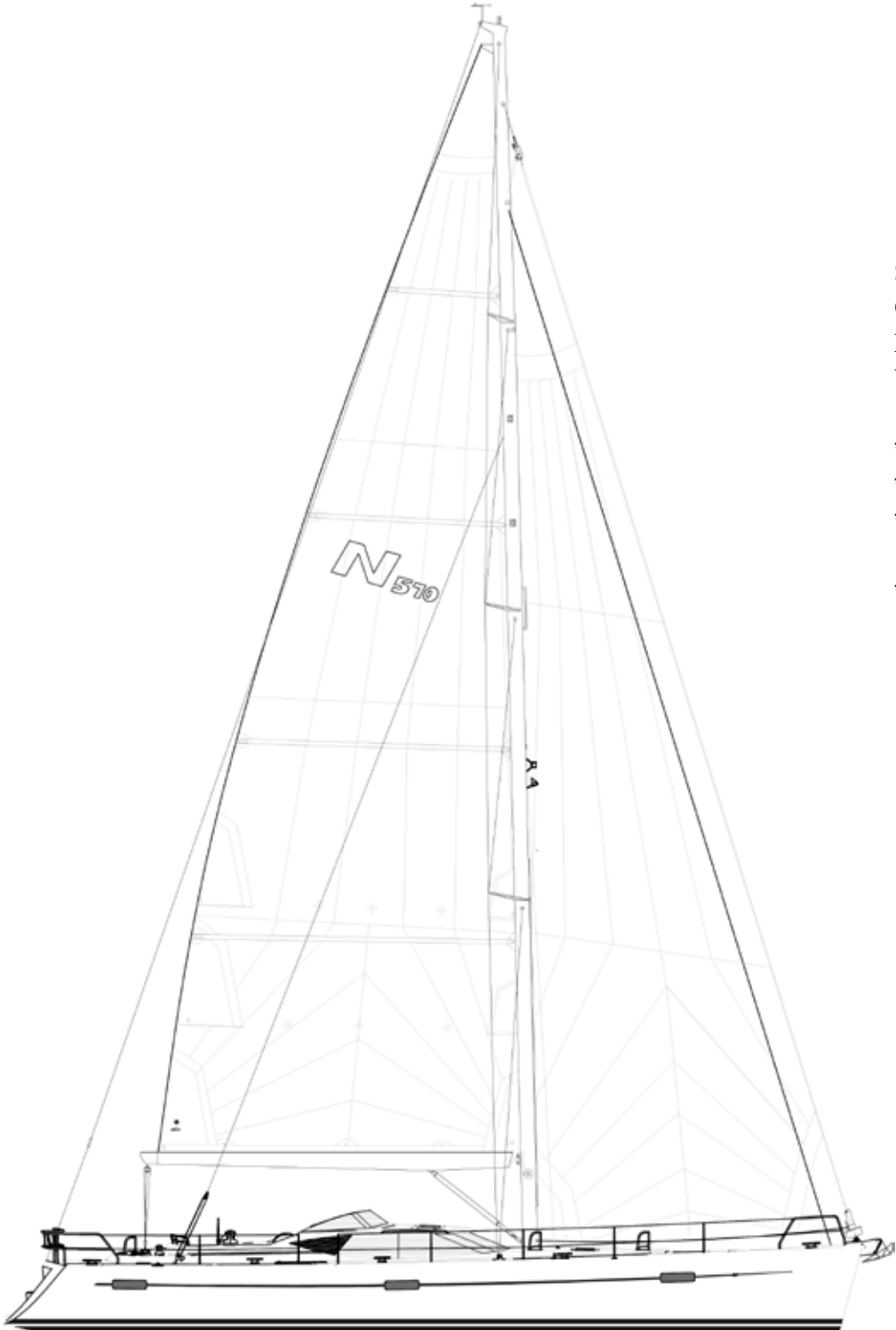
Spectra sandwich laminates exhibit easy handling and excellent durability. The base is encapsulated by film on which a ripstop taffeta is laminated. Newly developed finishing techniques minimize the chance of mildew growth.



Option

Hydra-Net®Radial

Especially designed for radial cut. With its special woven technique and finish, the Hydra-Net® Radial is probably the only woven cloth, which has qualities that exceed many laminate sail cloths. The cloth is tightly woven with an extreme amount of Spectra/Dyneema fibres in the warp, that is the primary yarn direction. In spite of this, the Hydra-Net is softer and easier to handle than equivalent laminate cloths. Tests from many long distance sailing tours have shown that Hydra-Net® Radial sails are extremely strong and long lasting.



Sails:	
Cruising	164 m²
Full batten main	92 m²
Working jib 106%	72 m²
* Cutter jib	40 m²
* Furling Genoa 135%	94 m²
* Gennaker	222 m²
* Optional equipment	



Engine

- Volvo Penta D4-180 hp
- Rubber mounts for effective vibration damping
- Aqua drive
- Water / Exhaust separator
- 4-Blade folding propeller
- Well sound insulated engine room
- The engine is easily accessible for servicing
- Separate fuel pre filter
- Generator 12 V/60 A and 24 V/80 A
- Single lever electronic engine control at one steering pedestal
- Instrument panel installed in cockpit



Batteries

The battery bank consists of 12 separate 2 volts AGM (Absorbed Glass Mat) cells 1000 Ah together supplying a total of 1 000 Ah @ 24V.

This battery bank platform containing 2 volt cells is state of the art electrical supply, superior to all other concepts. The reason is the equal cell load feature – a guarantee for outstanding durability and longevity.

With AGM technology you get deep cycling and high Amp capacity, ideal for feeding the inverter and DC consumers such as the navigation equipment and refrigerator.



Electrical system

Designed and development based on experience from merchant vessels shipping standards.

- Flush mounted main switch panel with circuit breakers by chart table.
- Code locked 12/24 V domestic and start system
- Two remote controlled main switches
- System voltage 24 V
- 12 V converter for instrumentation
- DC/ AC monitoring system
- Separate engine starting battery 120 Ah
- Shore supply 230 or 110 V, 4 x outlets and 20 m cable
- Separating transformer for galvanic protection
- 3 x 12 V socket outlets
- Charger 50 A
- Electric cables complies commersal standards
- Circuit breakers, relays etc. are mounted in sealed boxes

Champagne should be dry, so should your cabin. That's why we go nuts.

A Najad Yacht is designed to be perfect for the adventures of the sea, yet give you the best comfort available. A good example is one of the materials in our cabin mattresses. Cocolok – made from coconut fibres and natural latex.

Coconut fibre has very high lignin content so it is very tough. Despite this toughness, it is also elastic. The fibre hardly deteriorates at all over time. To make the fibre resilient and to make it possible to create very open and ventilating structures, the fibres are spun into ropes.

These ropes are transformed into sheets

and then sprayed with natural latex, juice from the rubber tree, to provide structure and elasticity. The natural latex is a fully renewable material inherently hypoallergenic, anti-microbial and dust-mite-resistant, making it perfect for allergy sufferers.

The result is a product that is naturally adapted to the human body. We feel comfortable around it. The open and resilient structure allows this coconut material to create a good microclimate, which is an advantage with mattresses.

Just a little detail to make your below deck comfort exceptional. Sweet dreams.



Coconut fibre has high lignin content so it is very tough, and yet elastic. It is also ventilating reducing dampness. In other words, your mattress will stay dry, strong and elastic for many years.



Space for the good life. Modern, timeless elegance inside that draws its inspiration from exclusive one-off yachts.



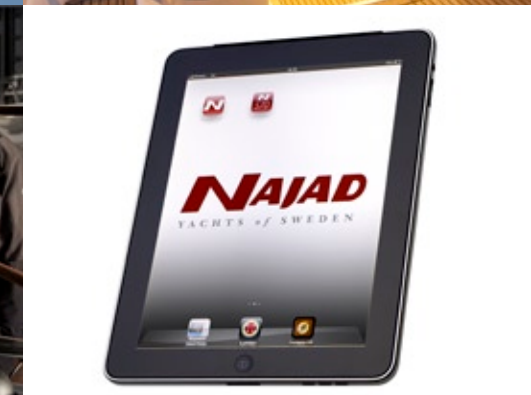
The unique Najad windscreen design gives you shelter enabling you to arrive well rested.



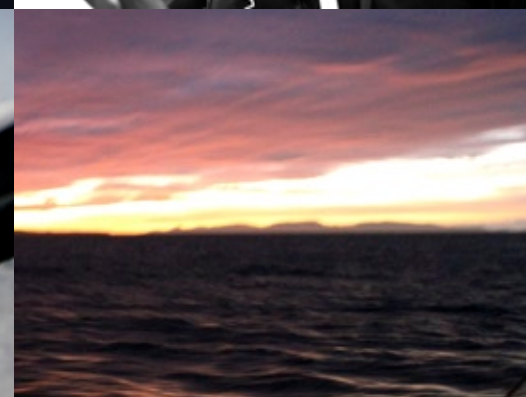
The N570
- Challenge
yourself in
comfort.



Spacious, deep and safe
cockpit for ease of handling
or wining and dining for
8 people.



State of the art electrical
system developed from
merchant vessel technology.



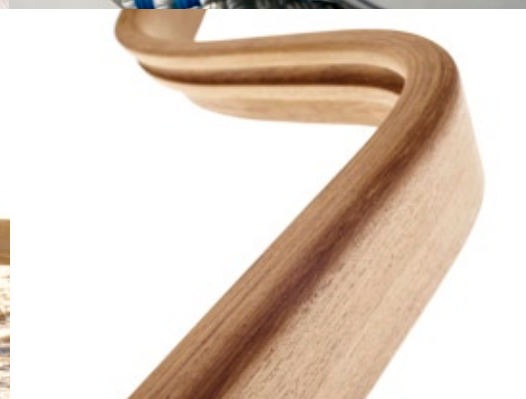
For nine hundred years the
people of Orust, Bohuslän have
been sailors and shipbuilders. A
heritage today carried on by the
skilled boat builders at Najad.



The construction – hull and
deck together with stingers
and bulkheads – creates a very
strong unit. In other words,
you can go anywhere in the
world in a standard Najad.



Like a real kitchen:
Spacious double linear galley with
Corian® work top with twin sinks,
Force 10 3-burner gas cooker with
oven, pressure system for hot &
cold water, self-closing drawers etc.





This brochure is for promotional purposes only and cannot form part of any contract or offer.
Najadvarvet AB will not be held responsible for the consequences of any errors or omission.
Pictures and illustrations are liable to show non-standard equipment.



NAJAD

YACHTS *o f* SWEDEN

Najadvarvet

Box 10, 473 21 Henan, Sweden

Tel: +46 304 692 300 Fax: +46 304 692 301 info@najad.se

Najad Yachts UK

Hamble Point Marina, School Lane, Hamble,
Southampton, SO31 4NB, UK

Tel: +44 2380 455 555 Fax: +44 2380 455 450
najadsales@btclick.com

www.najad.com